

# Courses

## EARLY CHILDHOOD EDUCATION

### ECED 197A (3 CR)

#### PRACTICUM I: EXPRESSING WARMTH TO CHILDREN

Offers a series of tasks coupled with a weekly seminar to investigate the student's own actions, articulate their fundamental values to others, deeply enhance their ability to connect with young children in their care, and improve their effectiveness as teachers. (NE)

### ECED 197B (3 CR)

#### PRACTICUM II: PLAYING RESPONSIVELY

Offers a series of tasks to complete in an ECE setting, coupled with a weekly seminar to understand young children's play, learn to play responsively, and be able to support a child's development and full flourishing as a human being within their culture and community. Prerequisite: ECED 197A. (NE)

### ECED 206 (3 CR)

#### BUILDING RELATIONSHIPS: CULTURE, FAMILY, COMMUNITY

Investigates family, school, and community systems as they relate to and support Native children's development in particular and all children's development in general. Emphasizes communication skills and introduces case management skills. Investigates opportunities for advocacy that promote continued growth and development of systems of support. Prerequisite: ECED 101 or 104. (NE)



## EARLY CHILDHOOD EDUCATION

### ECED 210 (3 CR)

#### EARLY CHILDHOOD DEVELOPMENT

Provides an introduction to childhood development theories and philosophies. Designed to give the student a survey of the factors that impact the development of a child from birth through age eight. Explores the interlocking components of biology, social structure, environment, and individual personality. Prerequisite: ENGL 101. (NE)

### ECED 212 (3 CR)

#### OBSERVATION, DOCUMENTATION & ASSESSMENT

Provides an introduction to formal and informal observation and assessment tools used in classrooms for children from birth to age eight. Designed to give the student a means of understanding the role of documentation in the development of curriculum and assessment that is responsive to a child's social, physical, emotional, and cognitive development. Prerequisite: ECED 101. (NE)

### ECED 213 (3 CR)

#### PRESCHOOL CURRICULUM DEVELOPMENT

Integrates understanding of relationships, the learning process, and developmentally effective approaches to teaching and learning, with knowledge of content areas to design, implement, and evaluate positive learning experiences for pre-school-aged Native children. Curriculum areas include: language and literacy, math and science, and social studies and humanities. Service learning or practicum hours required. Prerequisites: ECED 101 or ECED 104 or permission of instructor. (NE)

### ECED 220 (3 CR)

#### COMMUNICATION, LANGUAGE & LITERATURE

Introduction to research on language and literacy development and to strategies that support both. Emphasis on the observation of children and the development of non-verbal, verbal, and written language, including Native language and English. Service learning recommended. Prerequisite: ECED 101 or 104. (NE)



## EARLY CHILDHOOD EDUCATION

**\*DEACTIVATED 05.31.2013\***

### ECED 221 (3 CR)

#### HEALTH, SAFETY AND LEGAL ISSUES

Examines health and safety issues in early childhood group settings with an emphasis on teamwork with Native families and prevention. Provides instruction on teaching health and safety concepts in developmentally appropriate ways to young children. Includes examination of legal responsibilities concerning abuse and neglect and children with special needs. Prerequisite: ECED 101 or 104. (NE)

### ECED 297A (3 CR)

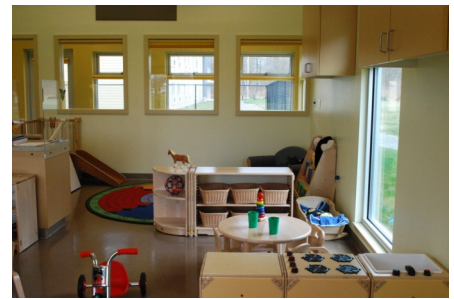
#### PRACTICUM III: TALKING INFORMATIVELY

Offers a series of tasks coupled with a weekly seminar to investigate and transform adult communications from directive to informative, promoting children's social responsibility and connection with others, and enriching their vocabularies. Prerequisite: ECED 197B. (NE)

### ECED 297B (3 CR)

#### PRACTICUM IV: ATTENDING TO INITIATIVE, PERSEVERANCE AND COOPERATION

Offers a series of tasks coupled with a weekly seminar to investigate how children take initiative, cooperate with one another, and persevere in difficult tasks. Students attend to these essential abilities and develop skills to promote them within their daily interactions. Prerequisite: ECED 297A. (NE)



CS – Communication Skills

NASD– Native American Studies

NS-Natural Science

QS-Quantitative Skills

HT – Humanities Theory

NE-Non Transferable Elective

NSL-Natural Science Lab

SS-Social Science

HP – Humanities Performance

TE-Transferable Elective

N-Non-Applicable



May include Indigenous Service Learning Component